



 **basix**:electricity manager™

Basix:Electricity Manager provides the agility and flexibility needed for the electricity industry starting with a range of proven asset, maintenance and works management functions.





The electricity industry has faced a number of challenges in recent years, with constant change and industry re-organisations. Given current environmental and regulatory impacts, the future looks set to further test the industry over the years ahead.

Today's electricity industry needs advanced technology and appropriate software solutions that can solve various problems, while remaining agile and flexible to the wave of constant change and business challenges.

**Basix:Electricity Manager** is designed for Asset Owners, Network Operators and Lines Companies but also has a range of Contractor options and mobile field staff functions. It provides the agility and flexibility needed for the electricity industry, and starts with a range of proven asset, maintenance and works management functions.

More than just recording all Network and other assets under management, these functions automate and control the whole life cycle of these assets. This is achieved through workflow and a range of processes covering all aspects of an assets life.

The standard **Basix:Electricity Manager** package includes the following functions for:

- Asset Register
- Works Packaging
- Work Tasks
- Maintenance Schedules

With optional functions for Annual Planning, Incident Management, Outage Management Recording, Reliability Reporting and Regulatory Valuation.

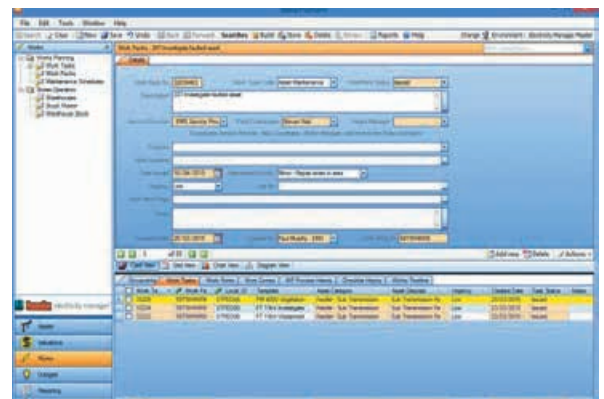
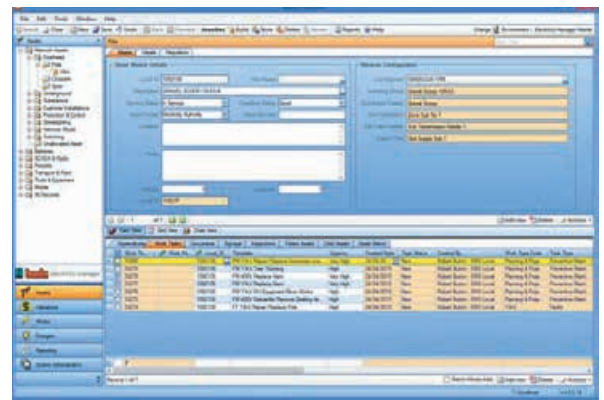
**Basix:Electricity Manager** has all the standard end-user features of **Basix:Platform**®, and can easily integrate with other key business solutions such as Financial Systems, Document Management Systems, Geographical or Mapping Systems (GIS). Alternatively, it can grow to replace legacy and packaged systems, and encapsulate a whole-of-business enterprise solution, in an ERP-style system that is designed specifically for your unique business.

Flexibility, combined with proven and simple use of technology, is the hallmark of every **Basix**™ business solution. Your staff won't have problems trying to learn how to use **Basix:Electricity Manager**, as every application or module built on the **Basix:Platform**® looks and operates in exactly the same manner. This provides a consistent approach across the whole organisation, significantly reducing staff training time and costs, and improving productivity and efficiency within the business.

**Basix:Electricity Manager** is an innovative solution designed to start small and grow progressively into an agile business solution, allowing your organisation to achieve greater flexibility and control over its commercial business operations.

**Basix:Electricity Manager** can solve immediate requirements as a point solution for works and asset management functions. However, with assistance of EMS consultants, this solution can quickly grow to become an enterprise-wide solution that encapsulates all facets of the organisation.

Motivate your staff to improving their performance and productivity incrementally by solving business issues within their areas using **Basix:Electricity Manager**.



If you would like to know more about **Basix:Electricity Manager** then contact us via [www.ems-solutions.com.au](http://www.ems-solutions.com.au) or [sales@ems-solutions.com.au](mailto:sales@ems-solutions.com.au)